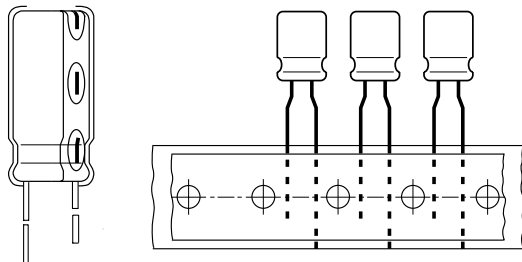




Aluminum Capacitors Radial Style



Component outlines.

Obsolete - please refer to: www.vishay.com/doc?25014

FEATURES

- Polarized Aluminum electrolytic capacitor
- High C x U product
- Small dimensions
- Compliant to RoHS directive 2002/95/EC



RoHS
COMPLIANT

APPLICATIONS

- General uses, industrial electronics, automotive electronics, audio/video systems
- Smoothing, filtering, coupling, decoupling, timing elements
- Portable and mobile units

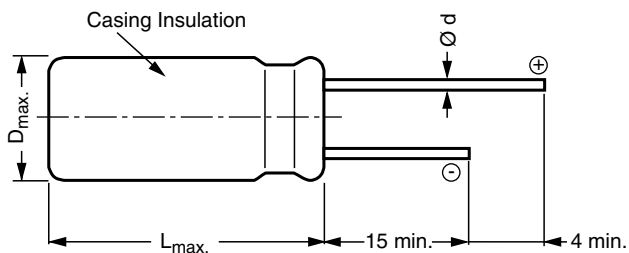
QUICK REFERENCE DATA			
DESCRIPTION	UNIT	VALUE	
Nominal case size (Ø D x L)	mm	5 x 11 to 18 x 40	
Rated capacitance range C _R	µF	0.47 to 10 000	
Capacitance tolerance	%	± 20	
Rated voltage range	V	10 to 350	400, 450
Category temperature range	°C	- 40 to + 85	- 25 to + 85
Endurance test at upper category temp.	h	2000	
Useful life at 85 °C and I _R applied	h	3000	
Useful life at 40 °C and I _R applied	h	70 000	
Failure rate	10 ⁻⁹ /h	≤ 90	
Based on sectional specification		IEC 60384-4/EN 130300	
Climatic category IEC 60068		40/085/56	25/085/56

SELECTION CHART FOR C _R , U _R AND RELEVANT NOMINAL CASE SIZES (Ø D x L in mm)												
C _R (µF)	RATED VOLTAGE (V)											
	10	16	25	35	50	63	100	160	250	350	400	450
0.47	-	-	-	-	5 x 11	-	5 x 11	-	-	-	-	-
1.0	-	-	-	-	5 x 11	-	5 x 11	6.3 x 11	-	-	-	8 x 11.5
2.2	-	-	-	-	5 x 11	-	5 x 11	6.3 x 11	8 x 11.5	10 x 12.5	10 x 12.5	10 x 12.5
3.3	-	-	-	-	5 x 11	-	5 x 11	8 x 11.5	10 x 12.5	10 x 12.5	10 x 12.5	10 x 16
4.7	-	-	-	-	5 x 11	5 x 11	5 x 11	8 x 11.5	10 x 12.5	10 x 12.5	10 x 16	10 x 20
10	-	-	-	-	5 x 11	5 x 11	6.3 x 11	10 x 12.5	10 x 16	10 x 20	12.5 x 20	12.5 x 20
22	-	-	-	-	5 x 11	6.3 x 11	8 x 11.5	10 x 20	12.5 x 20	12.5 x 25	12.5 x 25	16 x 25
33	-	-	-	5 x 11	6.3 x 11	6.3 x 11	10 x 12.5	12.5 x 20	12.5 x 25	12.5 x 25	16 x 25	16 x 13.5
47	-	-	5 x 11	6.3 x 11	6.3 x 11	8 x 11.5	10 x 16	12.5 x 20	12.5 x 25	16 x 25	16 x 35.5	16 x 35.5
100	5 x 11	6.3 x 11	6.3 x 11	8 x 11.5	8 x 11.5	10 x 12.5	10 x 20	16 x 25	16 x 31.5	18 x 40	-	-
220	6.3 x 11	8 x 11.5	8 x 11.5	10 x 12.5	10 x 16	10 x 20	12.5 x 25	18 x 35.5	-	-	-	-
330	8 x 11.5	8 x 11.5	10 x 12.5	10 x 16	10 x 20	12.5 x 20	16 x 25	-	-	-	-	-
470	8 x 11.5	10 x 12.5	10 x 16	10 x 20	12.5 x 20	12.5 x 25	16 x 31.5	-	-	-	-	-
1000	10 x 16	10 x 20	12.5 x 20	12.5 x 25	16 x 25	16 x 31.5	-	-	-	-	-	-
2200	12.5 x 20	12.5 x 25	16 x 25	16 x 31.5	18 x 35.5	-	-	-	-	-	-	-
3300	12.5 x 20	16 x 25	16 x 31.5	18 x 35.5	-	-	-	-	-	-	-	-
4700	16 x 25	16 x 31.5	18 x 35.5	-	-	-	-	-	-	-	-	-
6800	16 x 31.5	-	-	-	-	-	-	-	-	-	-	-
10 000	18 x 35.5	-	-	-	-	-	-	-	-	-	-	-

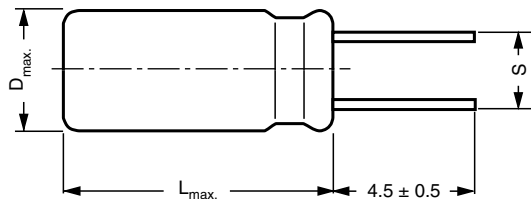
Note

Special values/dimensions on request
± 10% capacitance tolerance on request

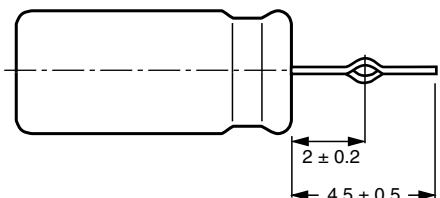
DIMENSIONS in millimeters **AND AVAILABLE FORMS**



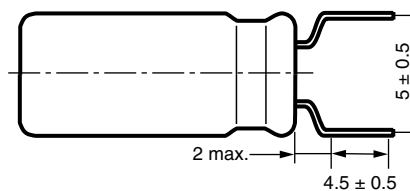
5 ≤ Ø D ≤ 18 Long leads EKO 00...



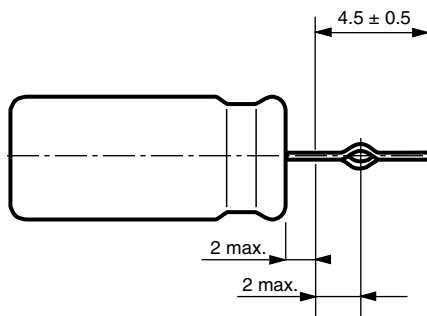
5 ≤ Ø D ≤ 18 Shortened leads EKO 05...
(S = 2/2.5/3.5/5/7.5 mm)



10 ≤ Ø D ≤ 18 Leads shortened and formed EKO 06...



5 ≤ Ø D ≤ 8 Leads bent open, shortened EKO 09...
(S = 5 mm)



5 ≤ Ø D ≤ Leads bent open, shortened and formed EKO 06...
(S = 5 mm)

Leads are solder-coated steel
Safety vent for Ø D ≥ 8 mm

RADIAL STYLE: DIMENSIONS in millimeters			
NOMINAL CASE SIZE Ø D x L	MAXIMUM SIZE D _{max.} x L _{max.}	LEAD Ø D ± 0.05	LEAD SPACING S ± 0.05
5 x 11	5.5 x 12.0	0.5	2.0
6.3 x 11	6.8 x 12.0	0.5	2.5
8 x 11.5	8.5 x 12.5	0.6	3.5
10 x 12.5	10.5 x 14.5	0.6	5.0
10 x 16	10.5 x 18.0	0.6	5.0
10 x 20	10.5 x 22.0	0.6	5.0
12.5 x 20	13.0 x 22.0	0.6	5.0
12.5 x 25	13.0 x 27.0	0.6	5.0
16 x 25	16.5 x 27.0	0.8	7.5
16 x 31.5	16.5 x 33.5	0.8	7.5
16 x 35.5	16.5 x 37.5	0.8	7.5
18 x 35.5	18.5 x 37.5	0.8	7.5
18 x 40	18.5 x 42.0	0.8	7.5



Aluminum Capacitors
Radial Style

Vishay Roederstein

ELECTRICAL DATA	
SYMBOL	DESCRIPTION
C_R	rated capacitance at 120 Hz
U_R	rated voltage
$\tan \delta$	max. dissipation factor at 120 Hz
R_{ESR}	max. equivalent series resistance at 120 Hz
I_R	rated alternating current (RMS) at 120 Hz and upper category temperature

Note

Unless otherwise specified, all electrical values at $T_a = 20^\circ\text{C}$, $P = 80\text{ kPa}$ to 120 kPa , $RH = 45\%$ to 75% .

ORDERING EXAMPLE

EKO 2200 $\mu\text{F}/25\text{ V}$, $\pm 20\%$, size: 16 mm x 25 mm

Leads: Long - Ordering code: EKO 00JG422E00

Leads: Short - Ordering code: EKO 05...

Leads: Bent open, shortened - Ordering code: EKO 09....

Leads: Bent open, shortened and formed - Ordering code: EKO 06...

The 14th place (\square), not indicated in the following table, is an inter-company code and is not relevant to your order.

ELECTRICAL DATA AND ORDERING INFORMATION							
U_R (V)	C_R 120 Hz (μF)	NOMINAL CASE SIZE $\varnothing D \times L$ (mm)	$\tan \delta$ 120 Hz	R_{ESR} 120 Hz (Ω)	I_R 120 Hz/85 $^\circ\text{C}$ (mA)	WEIGHT (g)	CATALOG NUMBER
10	100	5 x 11	0.20	3.18	157	0.5	EKO00AA310C00□
	220	6.3 x 11	0.20	1.45	267	0.8	EKO00BA322C00□
	330	8 x 11.5	0.20	0.97	386	1.1	EKO00PB333C00□
	470	8 x 11.5	0.20	0.68	460	1.1	EKO00PB347C00□
	1000	10 x 16	0.20	0.32	854	2.0	EKO00DD410C00□
	2200	12.5 x 20	0.22	0.16	1492	3.8	EKO00GE422C00□
	3300	12.5 x 25	0.24	0.12	1831	4.5	EKO00GG433C00□
	4700	16 x 25	0.26	0.09	2317	7.0	EKO00JG447C00□
	6800	16 x 31.5	0.30	0.07	2814	9.0	EKO00JS468C00□
	10000	18 x 35.5	0.36	0.06	3475	13.0	EKO00KL510C00□
16	100	6.3 x 11	0.16	2.55	201	0.8	EKO00BA310D00□
	220	8 x 11.5	0.16	1.16	352	1.1	EKO00PB322D00□
	330	8 x 11.5	0.16	0.77	431	1.1	EKO00PB333D00□
	470	10 x 12.5	0.16	0.54	598	1.5	EKO00DC347D00□
	1000	10 x 20	0.16	0.25	1042	2.5	EKO00DE410D00□
	2200	12.5 x 25	0.18	0.13	1713	4.5	EKO00GG422D00□
	3300	16 x 25	0.20	0.10	2194	7.0	EKO00JG433D00□
	4700	16 x 31.5	0.22	0.07	2718	9.0	EKO00JS447D00□
	6800	18 x 35.5	0.26	0.06	3360	13.0	EKO00KL468D00□
25	47	5 x 11	0.14	4.74	131	0.5	EKO00AA247E00□
	100	6.3 x 11	0.14	2.23	220	0.8	EKO00BA310E00□
	220	8 x 11.5	0.14	1.01	386	1.1	EKO00PB322E00□
	330	10 x 12.5	0.14	0.68	549	1.5	EKO00DC333E00□
	470	10 x 16	0.14	0.47	717	2.0	EKO00DD347E00□
	1000	12.5 x 20	0.14	0.22	1340	3.8	EKO00GE410E00□
	2200	16 x 25	0.16	0.12	2032	7.0	EKO00JG422E00□
	3300	16 x 31.5	0.18	0.09	2546	9.0	EKO00JS433E00□
	4700	18 x 35.5	0.20	0.07	3225	13.0	EKO00KL447E00□
35	33	5 x 11	0.12	5.79	123	0.5	EKO00AA233F00□
	47	6.3 x 11	0.12	4.07	169	0.8	EKO00BA247F00□
	100	8 x 11.5	0.12	1.91	291	1.1	EKO00PB310F00□
	220	10 x 12.5	0.12	0.87	501	1.5	EKO00DC322F00□
	330	10 x 16	0.12	0.58	672	2.0	EKO00DC333F00□
	470	10 x 20	0.12	0.41	875	2.5	EKO00DE347F00□
	1000	12.5 x 25	0.12	0.19	1633	4.5	EKO00GG410F00□
	2200	16 x 31.5	0.14	0.10	2401	9.0	EKO00JS422F00□
	3300	18 x 35.5	0.16	0.08	3065	13.0	EKO00KL433F00□



ELECTRICAL DATA AND ORDERING INFORMATION							
U _R (V)	C _R 120 Hz (μF)	NOMINAL CASE SIZE ∅ D x L (mm)	tan δ 120 Hz	R _{ESR} 120 Hz (Ω)	I _R 120 Hz/85 °C (mA)	WEIGHT (g)	CATALOG NUMBER
50	0.47	5 x 11	0.10	339.00	16	0.5	EKO00AA047H00□
	1	5 x 11	0.10	159.00	23	0.5	EKO00AA110H00□
	2.2	5 x 11	0.10	72.00	34	0.5	EKO00AA122H00□
	3.3	5 x 11	0.10	48.00	42	0.5	EKO00AA133H00□
	4.7	5 x 11	0.10	34.00	50	0.5	EKO00AA147H00□
	10	5 x 11	0.10	15.90	72	0.5	EKO00AA210H00□
	22	5 x 11	0.10	7.24	108	0.5	EKO00AA222H00□
	33	6.3 x 11	0.10	4.83	151	0.8	EKO00BA233H00□
	47	6.3 x 11	0.10	3.39	181	0.8	EKO00BA247H00□
	100	8 x 11.5	0.10	1.59	311	1.1	EKO00PB310H00□
	220	10 x 16	0.10	0.73	586	2.0	EKO00DD322H00□
	330	10 x 20	0.10	0.48	784	2.5	EKO00DE333H00□
	470	12.5 x 20	0.10	0.34	1098	3.8	EKO00GE347H00□
	1000	16 x 25	0.10	0.16	1937	7.0	EKO00JG410H00□
2200	18 x 35.5	0.12	0.09	2823	13.0	EKO00KL422H00□	
63	4.7	5 x 11	0.09	30.50	54	0.5	EKO00AA147J00□
	10	5 x 11	0.09	14.30	78	0.5	EKO00AA210J00□
	22	6.3 x 11	0.09	6.51	133	0.8	EKO00BA222J00□
	33	6.3 x 11	0.09	4.34	163	0.8	EKO00BA233J00□
	47	8 x 11.5	0.09	3.05	230	1.1	EKO00PB247J00□
	100	10 x 12.5	0.09	1.43	390	1.5	EKO00DC310J00□
	220	10 x 20	0.09	0.65	691	2.5	EKO00DE322J00□
	330	12.5 x 20	0.09	0.43	994	3.8	EKO00GE333J00□
	470	12.5 x 25	0.09	0.30	1893	4.5	EKO00GG347J00□
	1000	16 x 31.5	0.09	0.14	2289	9.0	EKO00JS410J00□
100	0.47	5 x 11	0.08	271.00	17	0.5	EKO00AA047L00□
	1	5 x 11	0.08	127.00	25	0.5	EKO00AA110L00□
	2.2	5 x 11	0.08	58.00	37	0.5	EKO00AA122L00□
	3.3	5 x 11	0.08	38.60	45	0.5	EKO00AA133L00□
	4.7	5 x 11	0.08	27.10	54	0.5	EKO00AA147L00□
	10	6.3 x 11	0.08	12.70	90	0.8	EKO00BA210L00□
	22	8 x 11.5	0.08	5.79	157	1.1	EKO00PB222L00□
	33	10 x 12.5	0.08	3.86	224	1.5	EKO00DC233L00□
	47	10 x 16	0.08	2.71	293	2.0	EKO00DD247L00□
	100	10 x 20	0.08	1.27	466	3.8	EKO00DE310L00□
	220	12.5 x 25	0.08	0.58	885	7.0	EKO00GG322L00□
	330	16 x 25	0.08	0.39	1202	7.0	EKO00JG333L00□
	470	16 x 31.5	0.08	0.27	1569	9.0	EKO00JS347L00□
	160	1	6.3 x 11	0.15	239.00	25	0.8
2.2		6.3 x 11	0.15	109.00	37	0.8	EKO00BA122M00□
3.3		8 x 11.5	0.15	72.00	53	1.1	EKO00PB133M00□
4.7		8 x 11.5	0.15	50.80	63	1.1	EKO00PB147M00□
10		10 x 12.5	0.15	23.90	107	1.5	EKO00DC210M00□
22		10 x 20	0.15	10.90	189	2.5	EKO00DE222M00□
33		12.5 x 20	0.15	7.24	272	3.8	EKO00GE233M00□
47		12.5 x 20	0.15	5.08	325	3.8	EKO00GE247M00□
100		16 x 25	0.15	2.39	573	7.0	EKO00JG310M00□
220		18 x 35.5	0.15	1.09	1047	13.0	EKO00KL322M00□
250	2.2	8 x 11.5	0.15	109.00	46	1.1	EKO00PB122N00□
	3.3	10 x 12.5	0.15	72.00	61	1.5	EKO00DC133N00□
	4.7	10 x 12.5	0.15	50.80	73	1.5	EKO00DC147N00□
	10	10 x 16	0.15	23.90	117	2.0	EKO00DD210N00□
	22	12.5 x 20	0.15	10.90	222	3.8	EKO00GE222N00□
	33	12.5 x 25	0.15	7.24	297	4.5	EKO00GG233N00□
	47	12.5 x 25	0.15	5.08	393	4.5	EKO00GG247N00□
	100	16 x 31.5	0.15	2.39	627	9.0	EKO00JS310N00□



Aluminum Capacitors
Radial Style

Vishay Roederstein

ELECTRICAL DATA AND ORDERING INFORMATION							
U _R (V)	C _R 120 Hz (μF)	NOMINAL CASE SIZE ∅ D x L (mm)	tan δ 120 Hz	R _{ESR} 120 Hz (Ω)	I _R 120 Hz/85 °C (mA)	WEIGHT (g)	CATALOG NUMBER
350	2.2	10 x 12.5	0.20	145.00	50	1.5	EKO00DC122O00□
	3.3	10 x 12.5	0.20	97.00	61	1.5	EKO00DC133O00□
	4.7	10 x 12.5	0.20	68.00	73	1.5	EKO00DC147O00□
	10	10 x 20	0.20	31.80	128	2.5	EKO00DE210O00□
	22	12.5 x 25	0.20	14.50	242	4.5	EKO00GG222O00□
	33	12.5 x 25	0.20	9.65	297	4.5	EKO00GG233O00□
	47	16 x 25	0.20	6.78	393	7.0	EKO00JG247O00□
	100	18 x 40	0.20	3.18	741	16.0	EKO00KK310O00□
400	2.2	10 x 12.5	0.20	145.00	50	1.5	EKA00DC122X00□
	3.3	10 x 12.5	0.20	97.00	61	1.5	EKO00DC133X00□
	4.7	10 x 16	0.20	68.00	80	2.0	EKO00DD147X00□
	10	12.5 x 20	0.20	31.80	150	3.8	EKO00GE210X00□
	22	12.5 x 25	0.20	14.50	282	4.5	EKO00GG222X00□
	33	16 x 25	0.20	9.65	329	7.0	EKO00JG233X00□
	47	16 x 35.5	0.20	6.78	451	11.0	EKO00JL247X00□
450	1.0	8 x 11.5	0.20	266.00	26	1.1	EKO00PB110P00□
	2.2	10 x 12.5	0.20	145.00	45	1.5	EKO00DC122P00□
	3.3	10 x 16	0.20	97.00	60	2.0	EKO00DD133P00□
	4.7	10 x 20	0.20	68.00	78	2.5	EKO00DE147P00□
	10	12.5 x 20	0.20	31.80	134	3.8	EKO00GE210P00□
	22	16 x 25	0.20	14.50	240	7.0	EKO00JG222P00□
	33	16 x 31.5	0.20	9.65	322	9.0	EKO00JS233P00□
	47	16 x 35.5	0.20	6.78	403	11.0	EKO00JL247P00□

LOW TEMPERATURE BEHAVIOUR									
IMPEDANCE RATIO Z(T ₂) / Z(T ₁) AT 120 Hz									
T ₂ /T ₁	RATED VOLTAGE (V)								
	10	16	25	35 - 100	160	250	350	400	450
- 25 °C / - 20 °C	3	2	2	2	4	8	8	16	16
- 25 °C / + 20 °C	8	6	4	3	8	12	12	-	-

LEAKAGE CURRENT

Formula for calculation of the maximum leakage current for acceptance tests I_L:

$$I_{L2} [\mu A] \leq 0.01 \cdot C_R [\mu F] \cdot U_R [V] \quad \text{or } 3 \mu A \quad \text{for } U_R \leq 100 V \text{ (whichever is greater)}$$

[Test conditions: U_R, 20 °C, 2 minutes (U_R ≤ 100 V)/5 minutes U_R > 100 V]

$$I_{L5} [\mu A] \leq 0.02 \cdot C_R [\mu F] \cdot U_R [V] \quad +15 \mu A \quad \text{for } U_R > 100 V$$

PACKAGING UNITS / MIN. ORDER QUANTITY					
SIZE CODES		BULK		AMMO	VOLTAGE CODES
		LONG LEADS	CUT LEADS		
AA	5 x 11	500/2000	500/2000	2000/2000	C = 10 V
BA	6.3 x 11	500/1500	500/1500	1500/1500	D = 16 V
PB	8 x 11.5	300/1200	300/1200	1000/1000	E = 25 V
DC	10 x 12.5	200/1000	800/800	500/1000	F = 35 V
DD	10 x 16	200/1000	700/1400	500/1000	H = 50 V
DE	10 x 20	200/1000	500/1000	500/1000	J = 63 V
GE	12.5 x 20	100/1000	300/1200	400/1200	L = 100 V
GG	12.5 x 25	100/1000	250/1000	400/1200	M = 160 V
JG	16 x 25	50/500	150/600	250/500	N = 250 V
JS	16 x 31.5	50/500	150/600	250/500	O = 350 V
JL	16 x 35.5	50/500	100/500	250/500	X = 400 V
KL	18 x 35.5	50/400	100/400	200/400	P = 450 V
KK	18 x 40	50/400	80/400	-	-



Disclaimer

All product specifications and data are subject to change without notice.

Vishay Intertechnology, Inc., its affiliates, agents, and employees, and all persons acting on its or their behalf (collectively, "Vishay"), disclaim any and all liability for any errors, inaccuracies or incompleteness contained herein or in any other disclosure relating to any product.

Vishay disclaims any and all liability arising out of the use or application of any product described herein or of any information provided herein to the maximum extent permitted by law. The product specifications do not expand or otherwise modify Vishay's terms and conditions of purchase, including but not limited to the warranty expressed therein, which apply to these products.

No license, express or implied, by estoppel or otherwise, to any intellectual property rights is granted by this document or by any conduct of Vishay.

The products shown herein are not designed for use in medical, life-saving, or life-sustaining applications unless otherwise expressly indicated. Customers using or selling Vishay products not expressly indicated for use in such applications do so entirely at their own risk and agree to fully indemnify Vishay for any damages arising or resulting from such use or sale. Please contact authorized Vishay personnel to obtain written terms and conditions regarding products designed for such applications.

Product names and markings noted herein may be trademarks of their respective owners.